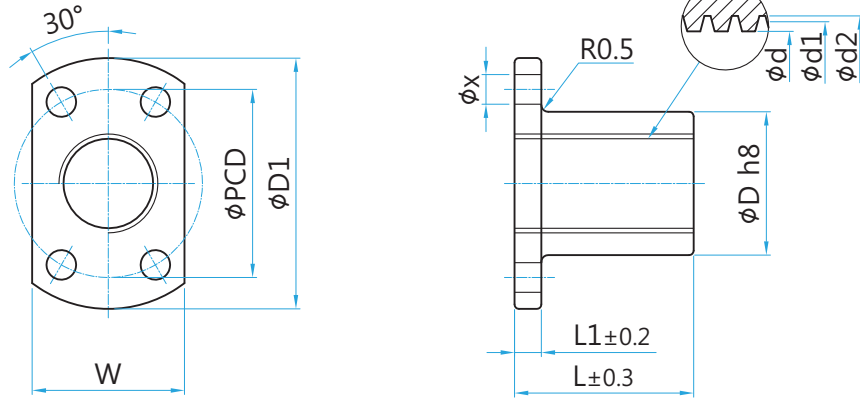


ATM

너트 재질 : BC6 (청동주물)



(unit : mm)

축경 (φD)	형번	리드	φD	φD1	L	L1	W	PCD	φx	내경 φd	유효경 φd1	곡경 φd2	Fo (kgf)	중량 (kg)	
10	ATM10	R L	2	20	36	24	5	22	26	4.3	8.5	9	10.5	260	0.1
12	ATM12	R L	2	22	44	30	5	26	31	5.4	10.5	11	12.5	400	0.1
14	ATM14	R L	3	22	44	30	5	26	31	5.4	11.5	12.5	14.5	500	0.1
16	ATM16	R L	3	28	51	35	6	32	38	6.6	13.5	14.5	16.5	640	0.2
18	ATM18	R L	4	32	56	40	6	34	42	6.6	14.5	16	18.5	890	0.3
20	ATM20	R L	4	32	56	40	6	34	42	6.6	16.5	18	20.5	1000	0.2
22	ATM22	R L	5	36	61	50	7	38	47	6.6	18	19.5	22.5	1260	0.4
25	ATM25	R L	5	36	61	50	7	38	47	6.6	21	22.5	25.5	1440	0.3
28	ATM28	R L	5	44	76	56	8	47	58	9	24	25.5	28.5	1800	0.6
32	ATM32	R L	6	44	76	56	8	47	58	9	27	29	32.5	2090	0.5
36	ATM36	R L	6	52	84	60	8	54	66	9	31	33	36.5	2630	0.8
40	ATM40	R L	6	58	98	70	10	60	76	11	35	37	40.5	3240	1.1
45	ATM45	R L	8	64	104	75	10	66	80	11	38	41	45.5	4110	1.5
50	ATM50	R L	8	68	109	80	10	70	85	11	43	46	50.5	5110	1.6

Fo : 동적허용추력 (kgf)